

## Data Sheet

**Type Number** ..... 6237  
**Designation IEC** ..... ---  
**System** ..... Li-Manganese dioxide / Organic Electrolyte

**UL Recognition:**..... MH 13654 (N)  
**Nominal Voltage** ..... 3 V  
**Typical Capacity C** ..... 1350 mAh  
 Load 1.0 kOhm, at 20°C down to 2.0 V

**Weight (approx.)** ..... 15 g  
**Volume** ..... 5,6 ccm  
**Coding**..... Date of Manufacturing Quarter / Year

**Temperature Ranges**

	min	max.
Storage	-55°C	75 °C
Discharge	-30°C	75°C

**Dimensions**

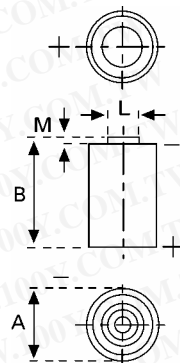
	min	max.
Diameter (A)	14,45	14,75
Height (B)	33,1	33,5
Shoulder Diameter[L]	7	
Shoulder Height [M]	0,6	

**Segment** ..... Electronic

**Main Applications** ..... Electronic

### Typical Capacities (at 20°C)

Discharge Type	Load	End Voltage:	2.0 V
Continuous 24h/d,7d/w	1000 Ω	Time:	500 h
		Capacity [mAh]:	1350
		Energy [MWh]:	3600



勝特力材料 886-3-5753170  
 勝特力电子(上海) 86-21-34970699  
 勝特力电子(深圳) 86-755-83298787  
[Http://www.100y.com.tw](http://www.100y.com.tw)

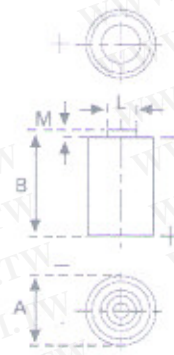
勝特力材料 886-3-5753170  
 勝特力电子(上海) 86-21-34970699  
 勝特力电子(深圳) 86-755-83298787  
[Http://www.100y.com.tw](http://www.100y.com.tw)

### 3.1 TYPES – TECHNICAL DATA



Type	Order No.	Nominal voltage [V]	Nominal capacity at 20 °C, down to 2.0 V, load (mAh)	Max. continuous discharge current (mA)	Weight (g)
CR 1/2 AA	6127 101 301	3	950 mAh-5.6 kΩ	10	11.5
CR 2/3 AA	6237 101 301	3	1.350 mAh-1.0 kΩ	15	15.0
CR AA	6117 101 301	3	2.000 mAh-1.0 kΩ	20	21.5
CR 2/3 A	6238 101 301	3	1.350 mAh-1.0 kΩ	15	17.0

TAB. 6  
 Technical data, CR High Capacity Primary Lithium Cylindrical Cells



AFIG. 42

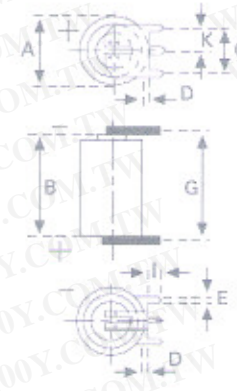


FIG. 43

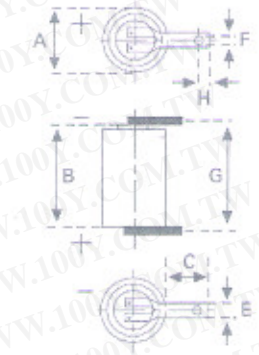


FIG. 44

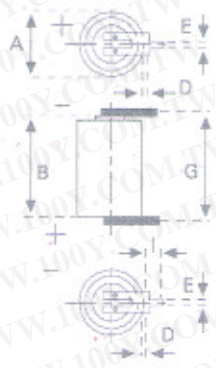
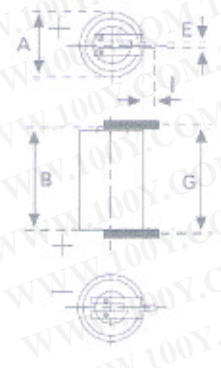


FIG. 45



AFIG. 46

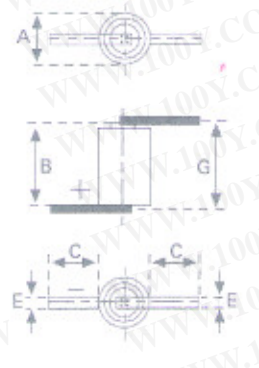


FIG. 47